



Central Florida Locating, Inc.
DBA **CFL Geological Solutions**

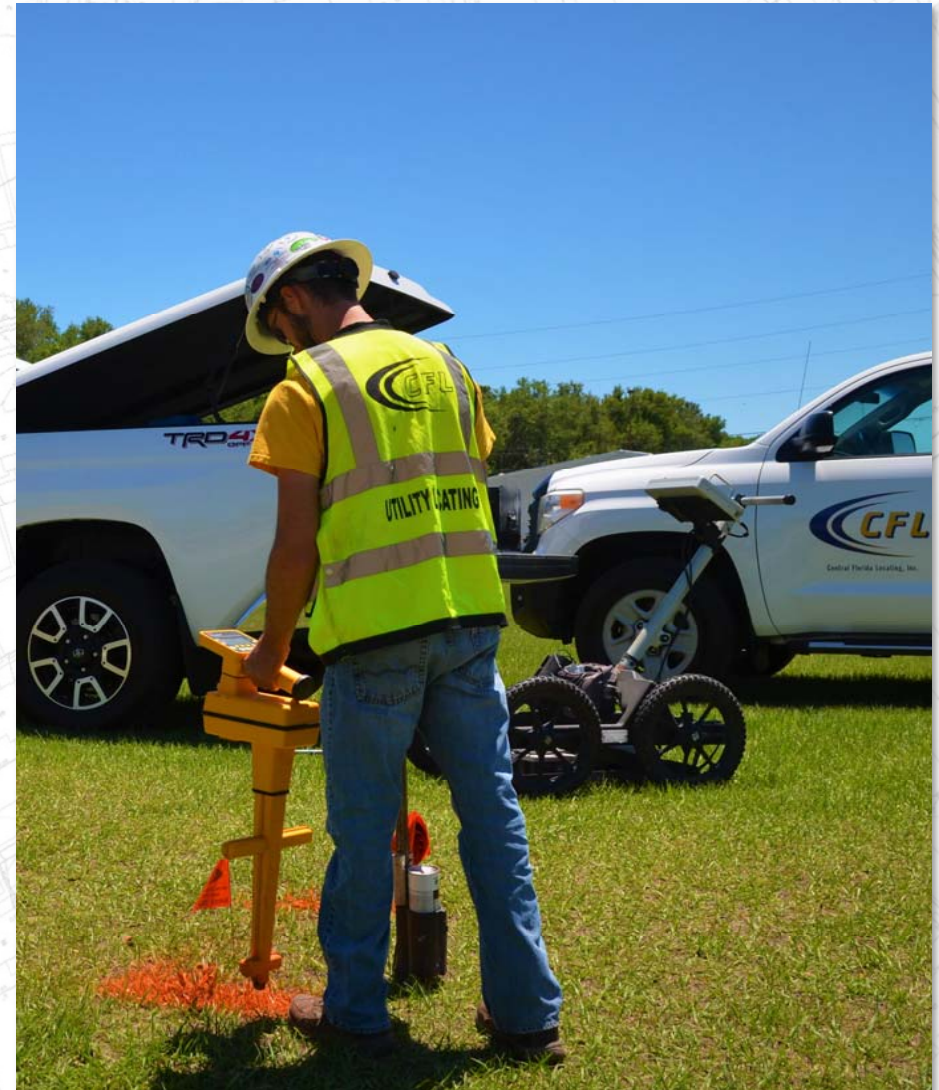


**CFL Delivers the Highest Level of Innovative &
Reliable Subsurface Solutions:**

GPR
3D GPR
Data Analysis
2D & 3D Deliverables
Concrete Imaging
Electromagnetic (EM)
Vacuum Excavation
Direct Push Soil Sampling

Contact us today to schedule your next project!

114 Jumper Dr N
Bushnell, FL 33513
Toll Free: 833.229.2227
Office: 352.793.4246
Fax: 352.793.8675



**The Leader in Geological
Services & Utility Locating**

**833.229.2227
www.cfl-inc.com**

Innovative and Reliable Subsurface Solutions



GROUND PENETRATING RADAR (GPR)

GPR, in the hands of CFL's experienced technicians and Geologists, is a powerful tool for reducing risks, saving time, and controlling your project costs.

3D GROUND PENETRATING RADAR (GPR)

CFL's 3D GPR Array System has the power to rapidly collect data for larger projects while delivering optimum clarity of the subsurface for the real-time 3D mapping of underground utilities and subsurface features.



CONCRETE IMAGING (GPR)

Using state-of-the-art GPR Concrete Imaging hand held antennas that are integrated with Electro-Magnetic (EM) technology, CFL's concrete imaging specialists accurately and efficiently scan in real time for targets such as rebar, conduits, wiring, post-tension cables, and more that, if left undetected, could lead to mishaps involving people and property.